

PACi Standard Wall Mounted Inverter+

• R32 GAS



The wall mounted units with stylish matt color can be offered for many applications such as studios, gyms, high ceiling areas and even computer server rooms.

The compact design and flat face ensure discreet installation, even in a small space.



CZ-RWS3
Optional Controller.
Infrared remote controller.



CZ-RE2C2
Optional Controller.
Simplified remote controller.



CZ-CENSC1
Optional Econavi Sensor.

			Single Phase		
			6,00kW	7,10kW	9,00kW
KIT			KIT-60PK2Z5	KIT-71PK2Z5	KIT-100PK2Z5
Remote controller			CZ-RTC5B	CZ-RTC5B	CZ-RTC5B
Cooling capacity	Nominal (Min - Max)	kW	6,10 (2,00 - 7,10)	7,10 (2,00 - 7,70)	9,00 (3,00 - 9,70)
EER ¹⁾	Nominal (Min - Max)	W/W	3,79	3,21	3,47 (5,36 - 3,13)
SEER ²⁾			6,80 A++	6,40 A++	6,50 A++
P _{design}		kW	6,10	7,10	9,00
Input power cooling	Nominal (Min - Max)	kW	1,61	2,21	2,59 (0,56 - 3,10)
Annual energy consumption ³⁾		kWh/a	314	388	485
Heating capacity	Nominal (Min - Max)	kW	6,10 (1,80 - 7,00)	7,10 (1,80 - 8,10)	9,00 (3,00 - 10,50)
COP ¹⁾	Nominal (Min - Max)	W/W	4,80	4,41	3,93 (5,36 - 3,56)
SCOP ²⁾			4,70 A++	4,60 A++	3,90 A
P _{design} at -10°C		kW	6,00	6,00	9,00
Input power heating	Nominal (Min - Max)	kW	1,27	1,61	2,29 (0,56 - 2,95)
Annual energy consumption ³⁾		kWh/a	1787	1826	3231
Indoor unit			S-60PZ2E5B	S-71PK2E5B	S-100PK2E5B
Air volume	Hi / Med / Lo	m ³ /min	20,0/18,0/15,0	20,0/18,0/15,0	22,0/18,5/15,0
Moisture removal volume		L/h	2,0	3,0	4,3
Sound pressure ⁴⁾	Hi / Med / Lo	dB(A)	47/44/40	47/44/40	49/45/41
Sound power	Hi / Med / Lo	dB	63/60/56	63/60/56	65/61/57
Dimension	HxWxD	mm	302x1120x236	302x1120x236	302x1120x236
Net weight		kg	14	14	14
Outdoor unit			U-60PZ2E5	U-71PZ2E5	U-100PZ2E5
Power source		V	220/230/240	220/230/240	220/230/240
Current	Cool (Hi / Med / Lo)	A	7,85/7,50/7,20	10,70/10,20/9,85	12,10/11,50/11,10
	Heat (Hi / Med / Lo)	A	6,10/5,85/5,60	7,85/7,50/7,20	10,60/10,20/9,70
Air volume	Cool / Heat	m ³ /min	40/45	50/45	76/70
Sound pressure	Cool / Heat (Hi)	dB(A)	46/48	49/49	52/52
Sound power	Cool / Heat (Hi)	dB	65/68	69/69	70/70
Dimension	HxWxD	mm	695x875x320	695x875x320	996x980x370
Net weight		kg	44	44	90
Piping connections	Liquid pipe	Inch (mm)	3/8 (9,52)	3/8 (9,52)	3/8 (9,52)
	Gas pipe	Inch (mm)	5/8 (15,88)	5/8 (15,88)	5/8 (15,88)
Pipe length range		m	3 - 40	3 - 40	5 - 50
Elevation difference (in/out) ⁵⁾		m	30	30	30
Pipe length for additional gas		m	30	30	30
Additional gas amount		g/m	35	35	45
Refrigerant (R32) / CO ₂ Eq.		kg / T	1,45/0,979	1,45/0,979	2,60/1,755
Operating range	Cool Min - Max	°C	-10 - +43	-10 - +43	-10 - +43
	Heat Min - Max	°C	-15 - +24	-15 - +24	-15 - +24

Accessories

CZ-RTC5B	Wired remote controller with Econavi function and datanavi
CZ-RWS3	Infrared remote controller
CZ-RE2C2	Simplified remote controller
PAW-GRDSTD40	Outdoor elevation platform 400x900x400mm
PAW-WTRAY	Tray for condenser water compatible with base ground support

Accessories

PAW-GRDBSE20	Outdoor base ground support for noise and vibration absorption
PAW-PACR3	Interfaces to run 3 units on Backup and alternative run
CZ-CAPWFC1	NEW Commercial WLAN Adaptor

Technical focus

- Modern design with flat face and compact size
- Stylish matt white color
- DC FAN for better efficiency and control
- Six directional piping outlet
- Datanavi simple support tool App with remote controller (CZ-RTC5B)
- Easy connection and control of external fan or ERV using the connector PAW-FDC on the indoor unit PCB. The external device can be controlled by the remote control of the Panasonic indoor unit

Closed discharge port

When the unit is turned OFF, the flap closes completely to prevent dust getting into the unit and to keep the equipment clean.

Quiet operation

These units are among the quietest in the industry, making them ideal for hotels and hospitals.

Smooth and durable design

Stylish matt color matches with modern interiors. The sleek, compact design ensures a discreet installation - even where space is limited.

Piping outlet in six directions

Piping outlet is possible in the six directions of right, right rear, right bottom, left, left rear and left bottom, making the installation work easier.

Air distribution is altered depending on the operational mode



			Three Phase
			9,00kW
			KIT-100PK2Z8
			CZ-RTC5B
KIT			
Remote controller			
Cooling capacity	Nominal (Min - Max)	kW	9,00 (3,00 - 9,70)
EER ¹⁾	Nominal (Min - Max)	W/W	3,47 (5,36 - 3,13)
SEER ²⁾			6,50 A++
Pdesign		kW	9,00
Input power cooling	Nominal (Min - Max)	kW	2,59 (0,56 - 3,10)
Annual energy consumption ³⁾		kWh/a	485
Heating capacity	Nominal (Min - Max)	kW	9,00 (3,00 - 10,50)
COP ¹⁾	Nominal (Min - Max)	W/W	3,93 (5,36 - 3,56)
SCOP ²⁾			3,90 A
Pdesign at -10°C		kW	9,00
Input power heating	Nominal (Min - Max)	kW	2,29 (0,56 - 2,95)
Annual energy consumption ³⁾		kWh/a	3231
Indoor unit			S-100PK2E5B
Air volume	Hi / Med / Lo	m ³ /min	22,0 / 18,5 / 15,0
Moisture removal volume		L/h	4,3
Sound pressure ⁴⁾	Hi / Med / Lo	dB(A)	49 / 45 / 41
Sound power	Hi / Med / Lo	dB	65 / 61 / 57
Dimension	HxWxD	mm	302 x 1120 x 236
Net weight		kg	14
Outdoor unit			U-100PZ2E8
Power source		V	380 / 400 / 415
Current	Cool (Hi / Med / Lo)	A	4,10 / 3,90 / 3,75
	Heat (Hi / Med / Lo)	A	3,60 / 3,45 / 3,30
Air volume	Cool / Heat	m ³ /min	76 / 70
Sound pressure	Cool / Heat (Hi)	dB(A)	52 / 52
Sound power	Cool / Heat (Hi)	dB	70 / 70
Dimension	HxWxD	mm	996 x 980 x 370
Net weight		kg	90
Piping connections	Liquid pipe	Inch (mm)	3/8 (9,52)
	Gas pipe	Inch (mm)	5/8 (15,88)
Pipe length range		m	5 - 50
Elevation difference (in/out) ⁵⁾		m	30
Pipe length for additional gas		m	30
Additional gas amount		g/m	45
Refrigerant (R32) / CO ₂ Eq.		kg / T	2,60 / 1,755
Operating range	Cool Min ~ Max	°C	-10 ~ +43
	Heat Min ~ Max	°C	-15 ~ +24

1) EER and COP calculation is based in accordance to EN14511. 2) For models below 12kW, the SEER and SCOP is calculated based on values of EU/626/2011. For models above 12kW, the SEER and SCOP is calculated based on values of EU/2281/2016. 3) The annual energy consumption is calculated in accordance to EU/626/2011. 4) The sound pressure of the units shows the value measured of the position 1m in front of the main body and 1m below the unit. The sound pressure is measured in accordance with Eurovent 6/C/006-97 specification. 5) When installing the outdoor unit at a higher position than the indoor unit. * Recommended fuse for the indoor 3A.

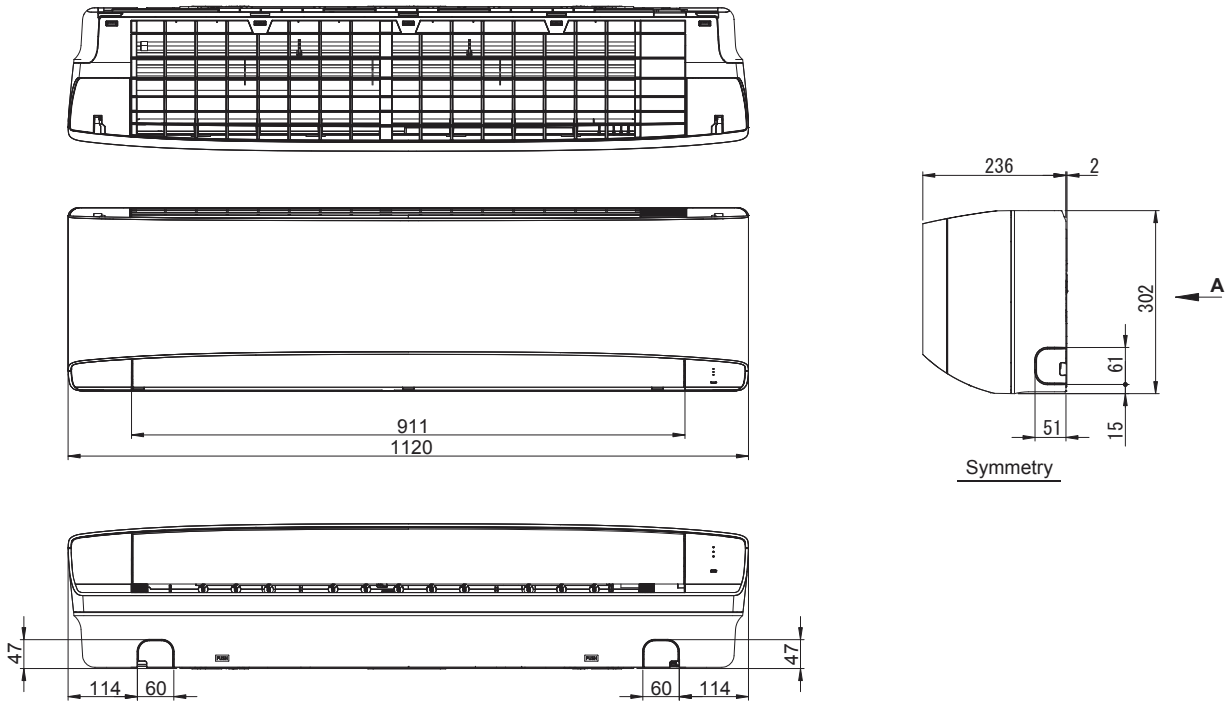


SEER and SCOP: For KIT-60PKZ25. INTERNET CONTROL: Optional.

Compatible with all Panasonic connectivity solutions. For detailed information go to the Control Systems section.

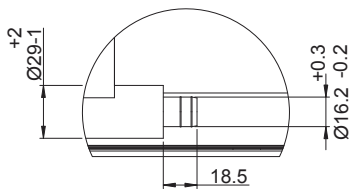
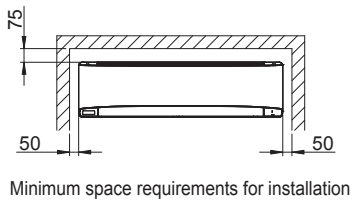
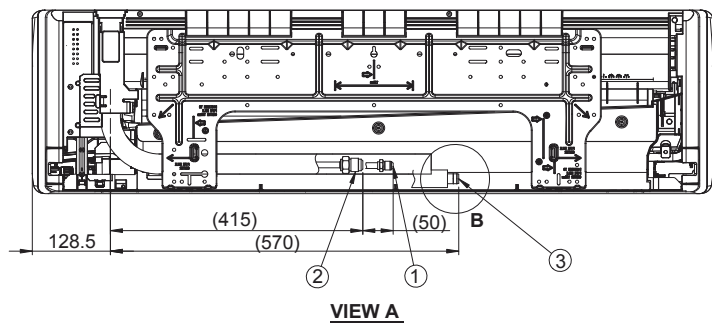
1-2. Dimensional Data

(A) Indoor units: S-36PK2E5B, 45PK2E5B, 50PK2E5B, 60PK2E5B, 71PK2E5B, 100PK2E5B

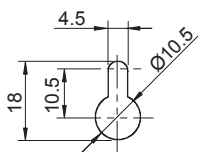


unit: mm

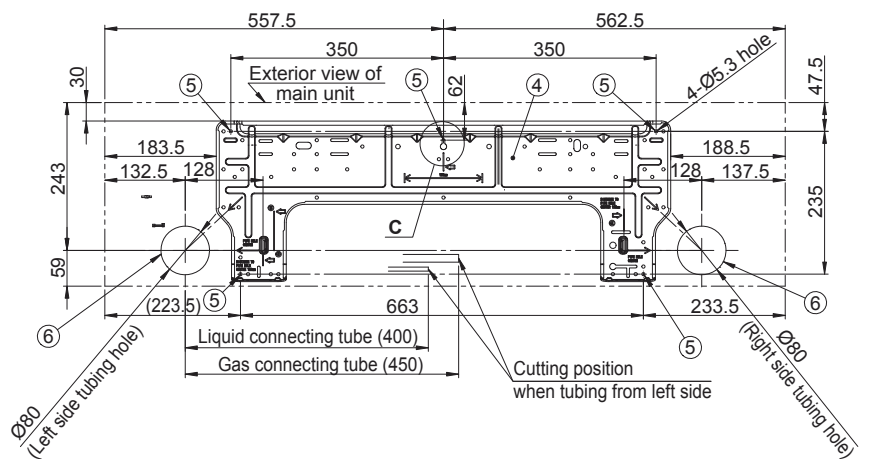
① Refrigerant tubing (liquid tube)	Type 36-50	Ø6.35 (flared)
	Type 60-100	Ø9.52 (flared)
② Refrigerant tubing (gas tube)	Type 36-50	Ø12.7 (flared)
	Type 60-100	Ø15.88 (flared)
③ Drain hose		
④ Rear panel		
⑤ Rear panel fixing holes (Ø5.3 holes or as shown in figure "C")		
⑥ Tubing and wiring holes (Ø80)		



Detailed view B



Detailed view C



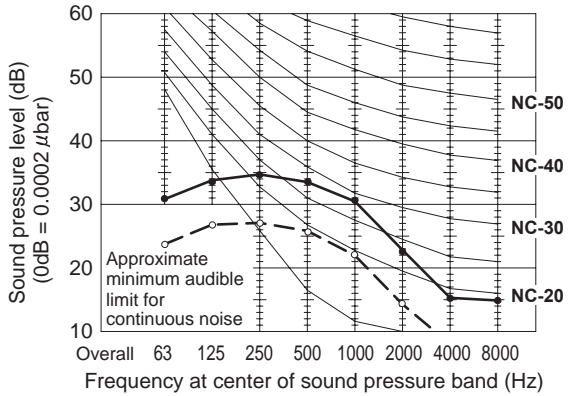
1-6. Noise Criterion Curves

(A) Indoor Units:

Wall Mounted Type

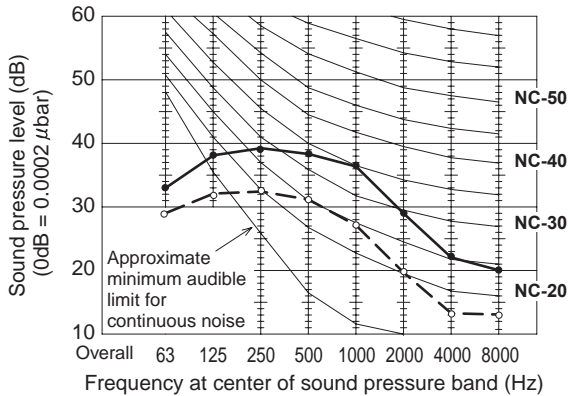
MODEL	: S-36PK2E5B	
SOUND LEVEL	Strong	35 dB(A)
	High	31 dB(A)
	Low	27 dB(A)

CONDITION : 1m in front of air discharge and then 1m below



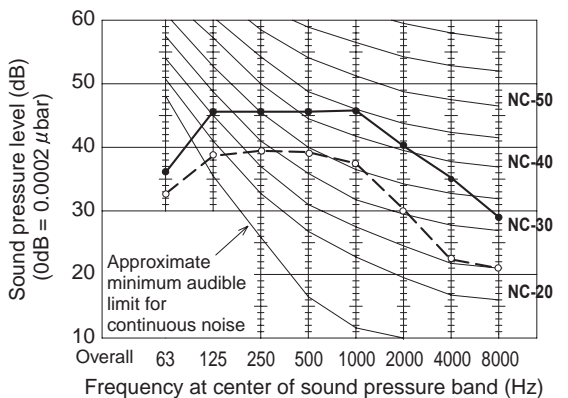
MODEL	: S-50PK2E5B	
SOUND LEVEL	Strong	40 dB(A)
	High	36 dB(A)
	Low	32 dB(A)

CONDITION : 1m in front of air discharge and then 1m below



MODEL	: S-100PK2E5B	
SOUND LEVEL	Strong	49 dB(A)
	High	45 dB(A)
	Low	41 dB(A)

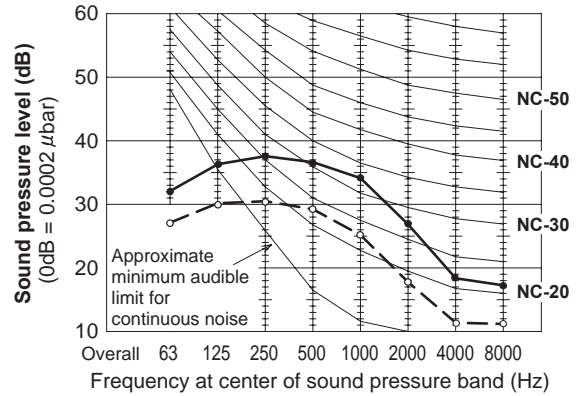
CONDITION : 1m in front of air discharge and then 1m below



—●— Strong
-○- Low

MODEL	: S-45PK2E5B	
SOUND LEVEL	Strong	38 dB(A)
	High	34 dB(A)
	Low	30 dB(A)

CONDITION : 1m in front of air discharge and then 1m below



MODEL	: S-60PK2E5B, S-71PK2E5B	
SOUND LEVEL	Strong	47 dB(A)
	High	44 dB(A)
	Low	40 dB(A)

CONDITION : 1m in front of air discharge and then 1m below

