

# NEW PANASONIC BIG PACi SERIES R32

20,00 – 25,00kW is ideally suited for small, mid retail applications.

In addition to its light net weight and compact body, split-able Hide Away design newly developed enables easy piping work in narrow installation space.



## Panasonic Big PACi, not only environmental friendly but also groundbreaking products

- High efficiency with Panasonic compressor as the driving force
- Compact & light indoor body
- Easy piping work with split-able Hide Away indoor design
- Separable indoor unit allows flexible installation to fit in narrow space
- Water Heat Exchanger compatibility
- Bluefin anti-rust coating
- Cloud Control compatible

## Compact and light indoor body keeping high efficiency

15% lighter weight vs conventional model helps installation work drastically.

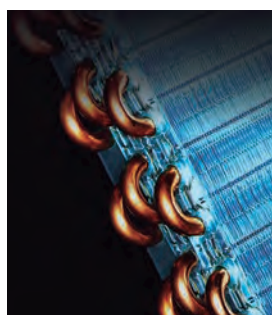
	Conventional model	New
20,00kW	100kg	86kg
25,00kW	104kg	88kg

DEPTH WAS  
REDUCED BY  
**230mm**



## Heat Exchanger with blue coated fins

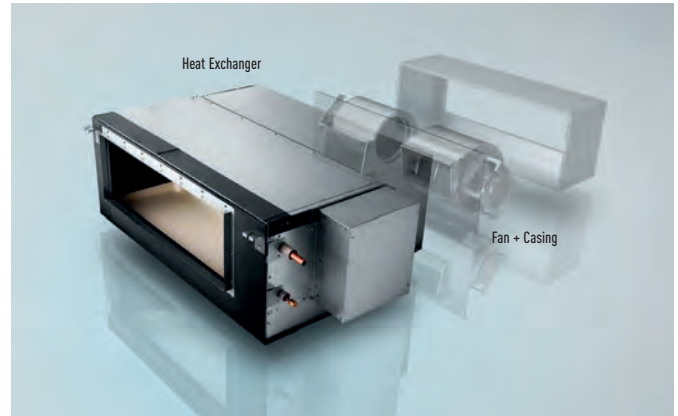
Blue coated fins for corrosion resistance are equipped as standard in all R32 PACi models.



## Easy piping work with split-able Hide Away indoor design

Part of heat exchanger and part of fan (fan + casing) can be separated while being installed.

The Hide Away indoor unit newly designed for easy reassemble totally fits in narrow space.



## Water Heat Exchanger compatibility

New PACi Water Heat Exchanger is available to connect with Big PACi systems. Offering various possibilities for hydronic application, heating, cooling and DHW.

## Cloud Control compatibility

Big PACi is compatible with Panasonic Cloud controls from wherever you are, 24/7/365.

Comfort cloud for end-users, owners

Panasonic AC Smart Cloud for professionals



## New Big PACi High Static Pressure Hide Away 20,00-25,00kW Inverter+ • R32 GAS



NEW  
2019



**CZ-RWS3 + CZ-RWRC3**  
Optional Controller.  
Infrared remote controller.

**CZ-RE2C2**  
Optional Controller.  
Simplified remote  
controller.

Big PACi with R32 has been introduced with full renewal of its indoor unit, offering hydronic application by PACi Water Heat Exchanger

Big PACi is useful and cost saving solution for small and mid size of projects, can be offered also with VRF system.

Compact and light indoor body keeping the high efficiency is split-able design for easy piping work at limited narrow space.

### Technical focus

- Highly efficient with compact indoor body, -16kg lighter than conventional model (10HP)
- Split-able Hide Away indoor design for easy & flexible piping work
- Better partial load control with Panasonic compressor
- Bluefin anti-rust coating
- PACi Water Heat Exchanger compatible
- Panasonic cloud control compatible
- 0-10V demand control

### Three Phase

KIT			20,00kW	25,00kW
			KIT-200PE3ZH8	KIT-250PE3ZH8
Remote controller			CZ-RTC5B	CZ-RTC5B
Cooling capacity	Nominal (Min - Max)	kW	19,50 (5,70 - 21,00)	23,20 (6,10 - 27,00)
EER <sup>1)</sup>		W/W	3,22	3,11
SEER <sup>2)</sup>			5,25	4,84
Pdesign		kW	19,50	23,20
Input power cooling		kW	6,06	7,46
Heating capacity	Nominal (Min - Max)	kW	22,40 (5,00 - 25,00)	28,00 (5,50 - 29,00)
COP <sup>1)</sup>		W/W	3,61	3,41
SCOP <sup>2)</sup>			3,61	3,64
Pdesign at -10°C		kW	17,00	20,00
Input power heating		kW	6,21	8,21
<b>Indoor unit</b>			<b>S-200PE3E5B</b>	<b>S-250PE3E5B</b>
Power source		V / ph / Hz	220 - 230 - 240 / 1/50	220 - 230 - 240 / 1/50
External static pressure at shipment (adjustable)		Pa	75 <sup>3)</sup> - 120 - 180	75 <sup>3)</sup> - 130 - 200
Air volume	Hi / Med / Lo	m <sup>3</sup> /min	72 / 63 / 53	84 / 72 / 59
Sound pressure <sup>4)</sup>	Hi / Med / Lo	dB(A)	46 / 44 / 41	47 / 45 / 42
Dimension	H x W x D	mm	486 x 1456 x 916	486 x 1456 x 916
Net weight		kg	86	88
<b>Outdoor unit</b>			<b>U-200PZH2E8</b>	<b>U-250PZH2E8</b>
Power source		V / ph / Hz	380 - 400 - 415 / 3/50	380 - 400 - 415 / 3/50
Recommended fuse		A	30	30
Air volume	Cool / Heat	m <sup>3</sup> /min	164 / 164	160 / 160
Sound pressure	Cool / Heat (Hi)	dB(A)	59 / 61	59 / 63
Sound power	Cool / Heat (Hi)	dB	77 / 79	78 / 82
Dimension <sup>5)</sup>	H x W x D	mm	1500 x 980 x 370	1500 x 980 x 370
Net weight		kg	117	128
Piping connections	Liquid pipe	Inch (mm)	3/8 (9,52)	1/2 (12,70)
	Gas pipe	Inch (mm)	1 (25,40)	1 (25,40)
Pipe length range		m	5 - 90	5 - 60
Elevation difference (in/out) <sup>6)</sup>		m	30	30
Pipe length for additional gas		m	30	30
Additional gas amount		g/m	60	80
Refrigerant (R32) / CO <sub>2</sub> Eq.		kg / T	4,20 / 2,835	5,20 / 3,51
Operating range	Cool Min ~ Max	°C	-15 ~ +46	-15 ~ +46
	Heat Min ~ Max	°C	-20 ~ +24	-20 ~ +24

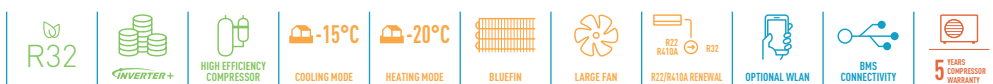
### Accessories

<b>CZ-RTC5B</b>	Wired remote controller with Econavi function and datanavi
<b>CZ-RWS3 + CZ-RWRC3</b>	Infrared remote controller
<b>CZ-RE2C2</b>	Simplified remote controller

### Accessories

<b>PAW-GRDSTD40</b>	Outdoor elevation platform 400x900x400mm
<b>CZ-CAPWFC1</b>	<b>NEW</b> Commercial WLAN Adaptor

1) EER and COP calculation is based in accordance to EN14511. 2) For models below 12kW, the SEER and SCOP is calculated based on values of EU/626/2011. For models above 12kW, the SEER and SCOP is calculated based on values of EU/2281/2016. 3) Factory setting. 4) The sound pressure of the units shows the value measured of the position 1,5 below the unit. The sound pressure is measured in accordance with Eurovent 6/C/006-97 specification. 5) Add 100mm for indoor unit or 70mm for outdoor unit for piping port. 6) When installing the outdoor unit at a higher position than the indoor unit. \* No filter included. \* These models will be available in May 2019.

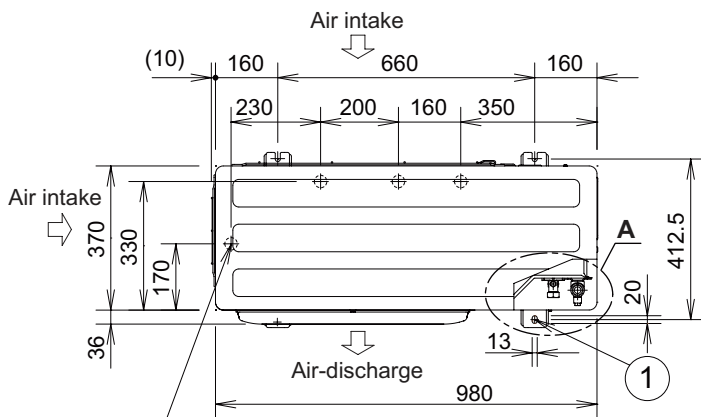


INTERNET CONTROL: Optional.

Compatible with all Panasonic connectivity solutions. For detailed information go to the Control Systems section.

**(B) Outdoor Unit: U-200PZH2E8**

Unit: mm



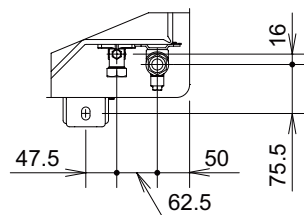
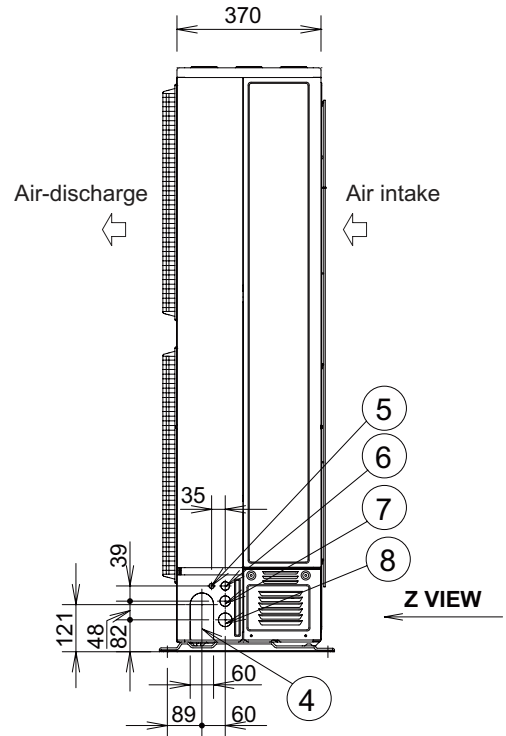
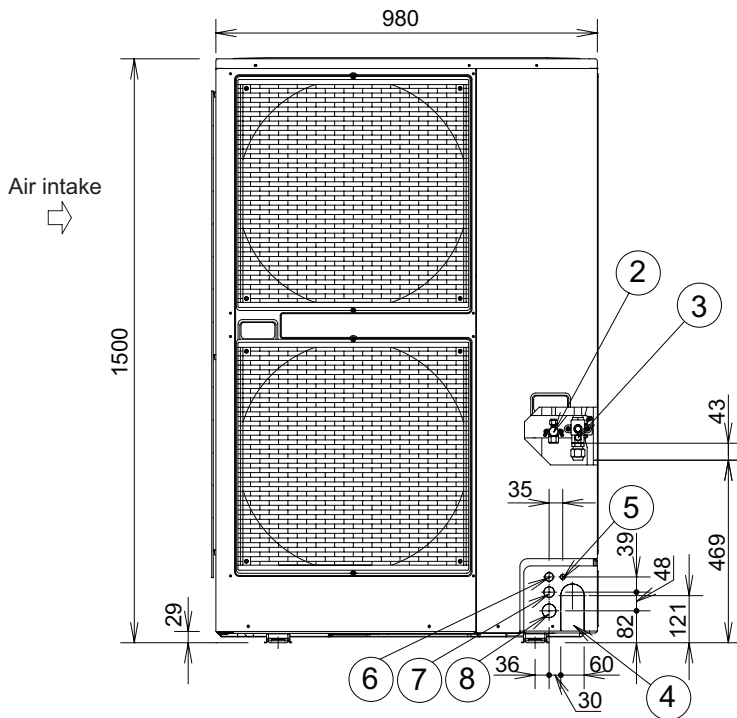
4 ×  $\phi$  32 holes (holes for drain)  
 When using a drain pipe, install the drain socket (field supply) onto the drain port. Seal the other drain port with the rubber cap.

①	Mounting hole (4-R6.5), anchor bolt : M10
②	Refrigerant tubing (liquid tube), flared connection ( $\phi$ 9.52)
③	Refrigerant tubing (gas tube), flared connection ( $\phi$ 19.05) *1
④	Refrigerant tubing port
⑤	Electrical wiring port ( $\phi$ 13)
⑥	Electrical wiring port ( $\phi$ 22)
⑦	Electrical wiring port ( $\phi$ 27)
⑧	Electrical wiring port ( $\phi$ 35)

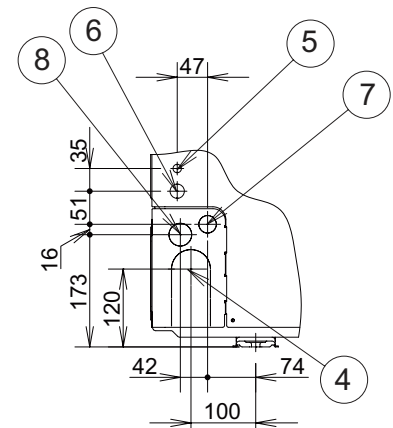
Specification for pipe connecting indoor unit to outdoor unit

		U-200PZH2E8
Valve size (Outdoor unit)	Liquid	$\phi$ 9.52
	Gas	$\phi$ 19.05 *1
Main tube (Outdoor unit to Indoor unit)	Liquid	$\phi$ 9.52
	Gas	$\phi$ 25.4

\*1 (Gas tubing connection) While the main gas tube is  $\phi$ 25.4, since connecting the outdoor unit's 3-way valve requires a  $\phi$ 19.05 flare, please be sure to use standard accessories joint tubing A for connection (brazing).



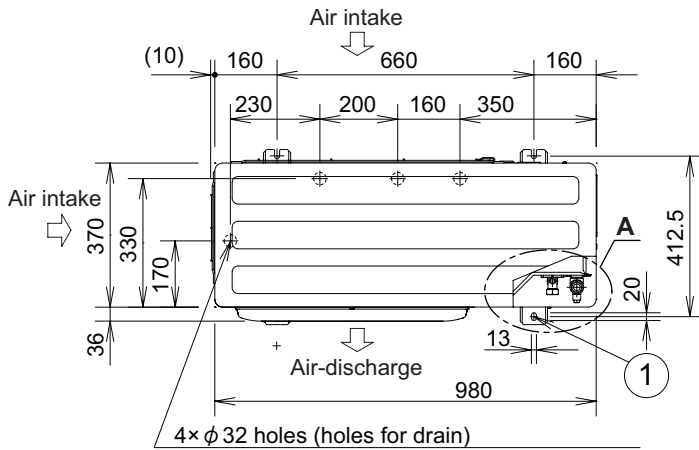
**A VIEW**



**Z VIEW**

(B) Outdoor Unit: U-250PZH2E8

Unit: mm



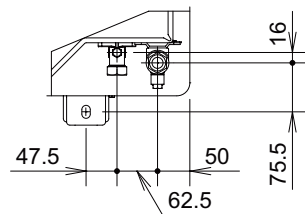
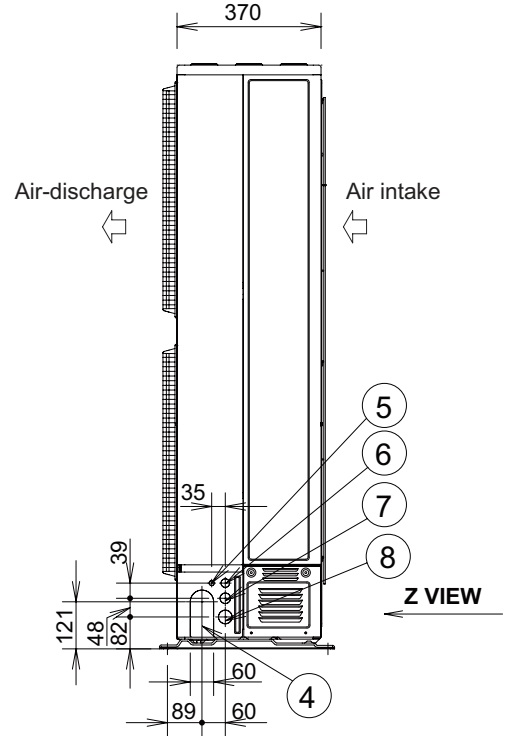
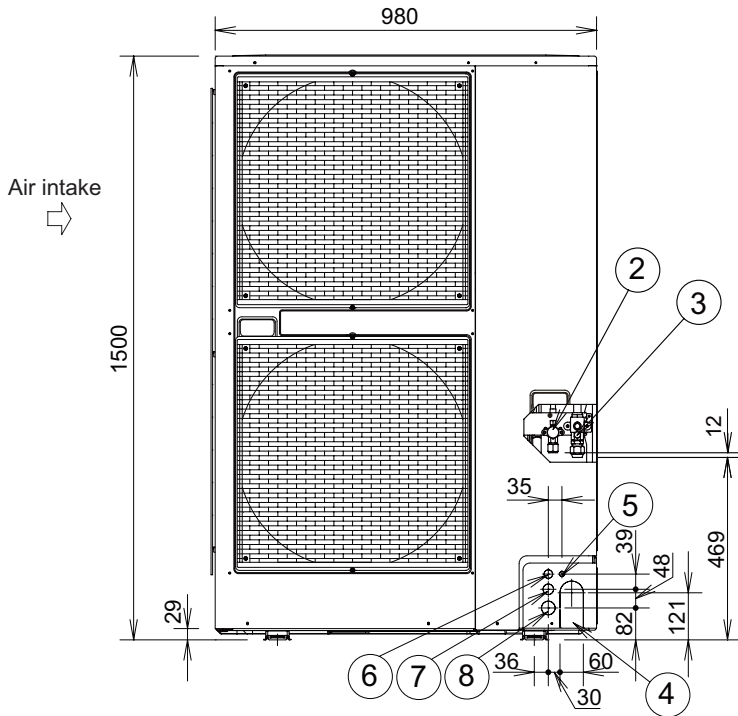
When using a drain pipe, install the drain socket (field supply) onto the drain port. Seal the other drain port with the rubber cap.

①	Mounting hole (4-R6.5), anchor bolt : M10
②	Refrigerant tubing (liquid tube), flared connection (ø12.7)
③	Refrigerant tubing (gas tube), flared connection (ø19.05)*1
④	Refrigerant tubing port
⑤	Electrical wiring port (ø13)
⑥	Electrical wiring port (ø22)
⑦	Electrical wiring port (ø27)
⑧	Electrical wiring port (ø35)

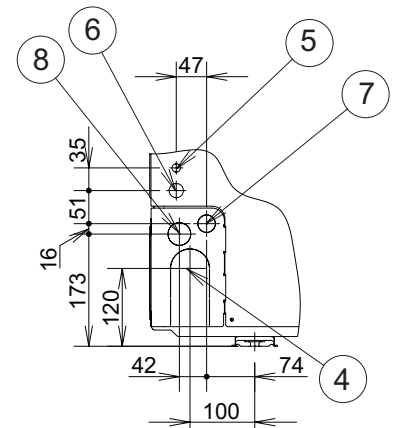
Specification for pipe connecting indoor unit to outdoor unit.

		U-250PZH2E8
Valve size (Outdoor unit)	Liquid	ø12.7
	Gas	ø19.05 *1
Main tube (Outdoor unit to Indoor unit)	Liquid	ø12.7
	Gas	ø25.4

\*1 (Gas tubing connection) While the main gas tube is ø25.4, since connecting the outdoor unit's 3-way valve requires a ø19.05 flare, please be sure to use standard accessories joint tubing A for connection (brazing).



A VIEW



Z VIEW