

L1 TYPE
2-WAY CASSETTE



Realisation of thin, compact and light units. Remarkable size and weight reductions have been achieved by improvement of the design around the fan, the weight of all models now being 30 Kg.

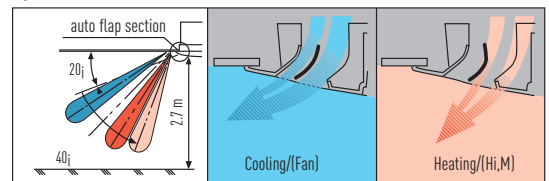
Technical focus

- Airflow and distribution is automatically altered depending on the operational mode of the unit
- Drain up is possible up to 500 mm from the drain port
- Simple maintenance

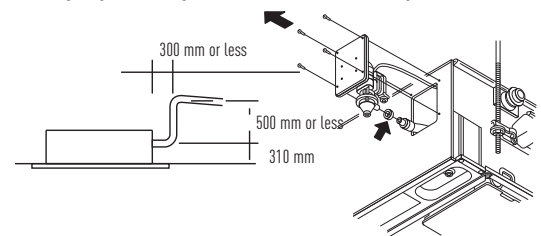
Simple maintenance

The drain pan is equipped with site wiring and can be removed. The fan case has a split construction, and the fan motor can be removed easily when the lower case is removed.

Airflow and distribution is automatically altered depending on the operational mode of the unit.



Drain up is possible up to 500 mm from the drain port.



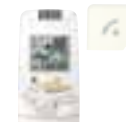
Maintenance of the drain pump is possible from two sides, from the left side (piping side) and from the inside of the unit.



PANEL
CZ-02KPL2
Big size panel (for S-73ML1E5)
CZ-03KPL2



OPTIONAL CONTROLLER
Timer remote controller
CZ-RTC2



OPTIONAL CONTROLLER
Wireless remote controller
CZ-RWSU2
CZ-RWSC2



OPTIONAL CONTROLLER
Simplified remote controller
CZ-RE2C2

MODEL NAME		S-22MY1E51	S-28MY1E51	S-36MY1E51	S-45MY1E51	S-56MY1E51
Power source		230 V / 1 phase / 50 Hz				
Cooling capacity	kW	2.2	2.8	3.6	4.7	5.6
Cooling power input	W	25	25	27	31	38
Cooling operating current	A	0.16	0.16	0.18	0.21	0.29
Heating capacity	kW	2.5	3.2	4.2	5.0	6.3
Heating power input	W	15	15	17	21	29
Heating operating current	A	0.13	0.13	0.15	0.18	0.26
Fan	Type	Centrifugal fan				
	Air flow rate (H/M/L)	m ³ /h	480 / 420 / 360	480 / 420 / 360	540 / 480 / 420	640 / 510 / 450
Sound pressure level (L/M/H)	dB(A)	25 / 27 / 30				
Dimensions	H x W x D	mm 283+(30) x 575 (625) x 575 (625)				
Pipe connections	Liquid	inches (mm)	1/4 (6.35)			
	Gas	inches (mm)	1/2 (12.7)			
	Drain piping		VP-20			
Net weight	Kg	18.4				

Rating Conditions: Cooling Indoor 27 °C DB / 19 °C WB. Cooling Outdoor 35 °C DB / 24 °C WB. Heating Indoor 20 °C DB. Cooling Outdoor 7 °C DB / 6 °C WB.
DB: Dry Bulb; WB: Wet Bulb

Energy saving	Environmentally friendly refrigerant	Easy maintenance	For more comfort	Perfect humidity control	Further comfort	Practical operation	Comfort everywhere	Easy to install	Easy control
INVERTER+	R410A	SELF-DIAGNOSING	AUTOMATIC FAN	MILD DRY	AUTO-FLAP CONTROL	AUTOMATIC RESTART	AIR SWEEP	BUILT-IN DRAIN PUMP	CONNECTIVITY



L1 TYPE 2-WAY CASSETTE

Realisation of thin, compact and light units. Remarkable size and weight reductions have been achieved by improvement of the design around the fan, the weight of all models now being 30 kg.

environmentally friendly refrigerant R410A	easy maintenance SELF-DIAGNOSING	for more comfort AUTOMATIC FAN	perfect humidity control MILD DRY	further comfort AUTO-FLAP CONTROL	practical operation AUTOMATIC RESTART	comfort everywhere AIR SWEEP	easy to install BUILT-IN DRAIN PUMP
--	-------------------------------------	-----------------------------------	--------------------------------------	--------------------------------------	--	---------------------------------	--

MODEL NAME			S-22ML1E5	S-28ML1E5	S-36ML1E5	S-45ML1E5	S-56ML1E5	S-73ML1E5
Power source			220/230/240V, 1 phase - 50, 60Hz					
Cooling capacity	kW		2.2	2.8	3.6	4.5	5.6	7.3
	BTU/h		7,500	9,600	12,000	15,000	19,000	25,000
Heating capacity	kW		2.5	3.2	4.2	5.0	6.3	8.0
	BTU/h		8,500	11,000	14,000	17,000	21,000	27,000
Power input	Cooling	kW	0.086/0.090/0.095	0.086/0.092/0.097	0.088/0.093/0.099	0.091/0.097/0.103/	0.091/0.097/0.103	0.135/0.145/0.154
	Heating	kW	0.055/0.058/0.062	0.055/0.060/0.064	0.057/0.061/0.066	0.060/0.065/0.070	0.060/0.065/0.070	0.100/0.109/0.117
Running current	Cooling	A	0.45/0.45/0.45	0.44/0.45/0.45	0.44/0.45/0.45	0.45/0.45/0.45	0.45/0.45/0.45	0.64/0.65/0.66
	Heating	A	0.29/0.29/0.30	0.28/0.29/0.30	0.28/0.29/0.30	0.29/0.29/0.30	0.29/0.29/0.30	0.46/0.48/0.49
Fan	Type		Sirocco fan	Sirocco fan	Sirocco fan	Sirocco fan	Sirocco fan	Sirocco fan
	Airflow rate (H/M/L)	m ³ /min	480/420/360	540/480/420	580/520/460	660/540/480	660/540/480	1,140/960/840
	Motor output	kW	0.03	0.03	0.03	0.03	0.03	0.05
Sound power level (L/M/H)		dB(A)	35/38/40	37/40/44	39/42/45	40/44/46	40/44/46	44/46/49
Sound pressure level (L/M/H)		dB(A)	24/27/30	26/29/33	28/31/34	29/33/35	29/33/35	33/35/38
Dimensions	H x W x D		mm	350+(8) x 840 (1,060) x 600 (680)	350+(8) x 840 (1,060) x 600 (680)	350+(8) x 840 (1,060) x 600 (680)	350+(8) x 840 (1,060) x 600 (680)	350+(8) x 1,140 (1,360) x 600 (680)
	Pipe connections	Liquid	inches (mm)	1/4 (Ø6.35)	1/4 (Ø6.35)	1/4 (Ø6.35)	1/4 (Ø6.35)	1/4 (Ø6.35)
Gas		inches (mm)	1/2 (Ø12.7)	1/2 (Ø12.7)	1/2 (Ø12.7)	1/2 (Ø12.7)	1/2 (Ø12.7)	5/8 (Ø15.88)
Drain piping			VP-25	VP-25	VP-25	VP-25	VP-25	VP-25
Net weight		kg	30	30	30	30	30	30

GLOBAL REMARKS	Rated conditions:	
	Cooling	Heating
	Indoor air temperature 27°C DB / 19°C WB	20°C DB
Outdoor air temperature 35°C DB / 24°C WB	7°C DB / 6°C WB	

Specifications subject to change without notice.

4. 2-Way Casstte Type (L1 Type)

4-1. Specifications

Unit specifications (A)

MODEL No.		Indoor Unit		S-22ML1E5					
POWER SOURCE				220 - 230 - 240 V, single-phase, 50/60 Hz					
PERFORMANCE				Cooling			Heating		
Capacity	kW		2.2			2.5			
	BTU / h		7,500			8,500			
Air circulation (Hi / Me / Lo)		m ³ / h	480 / 420 / 360						
Moisture removal (High)		Liters / h	0.5			-			
ELECTRICAL RATINGS									
Voltage rating		V	220	230	240	220	230	240	
Available voltage range		V	198 - 264			198 - 264			
Running amperes		A	0.45	0.45	0.45	0.29	0.29	0.30	
Power input		W	86	90	95	55	58	62	
Power factor		%	87	87	88	86	87	86	
Max. starting amperes		A	1	1	1	1	1	1	
FEATURES									
Controls		Microprocessor							
Timer		ON / OFF Timer (Max. 72 hr)							
Fan speeds		3 and Automatic control							
Airflow direction		Automatic (Remote control)							
Air filter		Washable, easy access, long life (2,500 hr)							
Refrigerant control		Electronic expansion valve							
Operation sound (Hi / Me / Lo)		dB-A	30 / 27 / 24						
Refrigerant tubing connections		Flare type							
Refrigerant tube diameter	Liquid tube	mm (in.)	6.35 (1 / 4)						
	Gas tube	mm (in.)	12.7 (1 / 2)						
Drain connection		25 A, OD32 mm							
Drain pump		Max. head 500 mm above drain connection							
Panel		Optional (CZ-02KPL2)							
Remote controller		Optional (Wired / Wireless)							
Refrigerant tubing kit / Accessories		Optional / -							
Color (Approximate value)		Munsell 10Y 9.3 / 0.4, RAL 9010-GL							
DIMENSIONS & WEIGHT				Indoor unit (including panel)		Package			
Unit dimensions	Height	mm (in.)	358 (14-3 / 32)		Body	310 (12-7 / 32)		Panel	
	Width	mm (in.)	1060 (41-23 / 32)		1082 (42-19 / 32)		1147 (45-5 / 32)		
	Depth	mm (in.)	680 (26-25 / 32)		658 (25-29 / 32)		789 (31-1 / 16)		
Net weight		kg (lbs.)	30 (66)		-		-		
Shipping weight		kg (lbs.)	-		26 (57)		11 (24)		
Shipping volume		m ³ (cu.ft)	-		0.221 (7.8)		0.149 (5.3)		

DATA SUBJECT TO CHANGE WITHOUT NOTICE.

Rated conditions

Cooling: Indoor air temperature 27°C DB / 19°C WB; Outdoor air temperature 35°C DB

Heating: Indoor air temperature 20°C DB; Outdoor air temperature 7°C DB / 6°C WB

4. 2-Way Casstte Type (L1 Type)

Unit specifications (B)

MODEL No.		Indoor Unit		S-28ML1E5				
POWER SOURCE				220 - 230 - 240 V, single-phase, 50/60 Hz				
PERFORMANCE				Cooling			Heating	
Capacity	kW		2.8			3.2		
	BTU / h		9,600			11,000		
Air circulation (Hi / Me / Lo)		m ³ / h	540 / 480 / 420					
Moisture removal (High)		Liters / h	1.0			-		
ELECTRICAL RATINGS								
Voltage rating		V	220	230	240	220	230	240
Available voltage range		V	198 - 264			198 - 264		
Running amperes		A	0.44	0.45	0.45	0.28	0.29	0.30
Power input		W	86	92	97	55	60	64
Power factor		%	89	89	90	89	90	89
Max. starting amperes		A	1	1	1	1	1	1
FEATURES								
Controls		Microprocessor						
Timer		ON / OFF Timer (Max. 72 hr)						
Fan speeds		3 and Automatic control						
Airflow direction		Automatic (Remote control)						
Air filter		Washable, easy access, long life (2,500 hr)						
Refrigerant control		Electronic expansion valve						
Operation sound (Hi / Me / Lo)		dB-A	33 / 29 / 26					
Refrigerant tubing connections		Flare type						
Refrigerant tube diameter	Liquid tube	mm (in.)	6.35 (1 / 4)					
	Gas tube	mm (in.)	12.7 (1 / 2)					
Drain connection		25 A, OD32 mm						
Drain pump		Max. head 500 mm above drain connection						
Panel		Optional (CZ-02KPL2)						
Remote controller		Optional (Wired / Wireless)						
Refrigerant tubing kit / Accessories		Optional / -						
Color (Approximate value)		Munsell 10Y 9.3 / 0.4, RAL 9010-GL						
DIMENSIONS & WEIGHT				Indoor unit (including panel)		Package		
Unit dimensions	Height	mm (in.)	358 (14-3 / 32)		Body	310 (12-7 / 32)		Panel
	Width	mm (in.)	1060 (41-23 / 32)			1082 (42-19 / 32)		1147 (45-5 / 32)
	Depth	mm (in.)	680 (26-25 / 32)			658 (25-29 / 32)		789 (31-1 / 16)
Net weight		kg (lbs.)	30 (66)			-		-
Shipping weight		kg (lbs.)	-			26 (57)		11 (24)
Shipping volume		m ³ (cu.ft)	-			0.221 (7.8)		0.149 (5.3)

DATA SUBJECT TO CHANGE WITHOUT NOTICE.

Rated conditions

Cooling: Indoor air temperature 27°C DB / 19°C WB; Outdoor air temperature 35°C DB

Heating: Indoor air temperature 20°C DB; Outdoor air temperature 7°C DB / 6°C WB

4. 2-Way Casstte Type (L1 Type)

Unit specifications (C)

MODEL No.		Indoor Unit		S-36ML1E5				
POWER SOURCE				220 - 230 - 240 V, single-phase, 50/60 Hz				
PERFORMANCE				Cooling			Heating	
Capacity	kW		3.6			4.2		
	BTU / h		12,000			14,000		
Air circulation (Hi / Me / Lo)		m ³ / h	580 / 520 / 460					
Moisture removal (High)		Liters / h	1.6			-		
ELECTRICAL RATINGS								
Voltage rating		V	220	230	240	220	230	240
Available voltage range		V	198 - 264			198 - 264		
Running amperes		A	0.44	0.45	0.45	0.28	0.29	0.30
Power input		W	88	93	99	57	61	66
Power factor		%	91	90	92	93	91	92
Max. starting amperes		A	1	1	1	1	1	1
FEATURES								
Controls		Microprocessor						
Timer		ON / OFF Timer (Max. 72 hr)						
Fan speeds		3 and Automatic control						
Airflow direction		Automatic (Remote control)						
Air filter		Washable, easy access, long life (2,500 hr)						
Refrigerant control		Electronic expansion valve						
Operation sound (Hi / Me / Lo)		dB-A	34 / 31 / 28					
Refrigerant tubing connections		Flare type						
Refrigerant tube diameter	Liquid tube	mm (in.)	6.35 (1 / 4)					
	Gas tube	mm (in.)	12.7 (1 / 2)					
Drain connection		25 A, OD32 mm						
Drain pump		Max. head 500 mm above drain connection						
Panel		Optional (CZ-02KPL2)						
Remote controller		Optional (Wired / Wireless)						
Refrigerant tubing kit / Accessories		Optional / -						
Color (Approximate value)		Munsell 10Y 9.3 / 0.4, RAL 9010-GL						
DIMENSIONS & WEIGHT				Indoor unit (including panel)		Package		
Unit dimensions	Height	mm (in.)	358 (14-3 / 32)		Body	310 (12-7 / 32)		Panel
	Width	mm (in.)	1060 (41-23 / 32)		1082 (42-19 / 32)		1147 (45-5 / 32)	
	Depth	mm (in.)	680 (26-25 / 32)		658 (25-29 / 32)		789 (31-1 / 16)	
Net weight		kg (lbs.)	30 (66)		-		-	
Shipping weight		kg (lbs.)	-		26 (57)		11 (24)	
Shipping volume		m ³ (cu.ft)	-		0.221 (7.8)		0.149 (5.3)	

DATA SUBJECT TO CHANGE WITHOUT NOTICE.

Rated conditions

Cooling: Indoor air temperature 27°C DB / 19°C WB; Outdoor air temperature 35°C DB

Heating: Indoor air temperature 20°C DB; Outdoor air temperature 7°C DB / 6°C WB

4. 2-Way Casstte Type (L1 Type)

Unit specifications (D)

MODEL No.		Indoor Unit		S-45ML1E5				
POWER SOURCE				220 - 230 - 240 V, single-phase, 50/60 Hz				
PERFORMANCE				Cooling			Heating	
Capacity	kW		4.5			5.0		
	BTU / h		15,000			17,000		
Air circulation (Hi / Me / Lo)		m ³ / h	660 / 540 / 480					
Moisture removal (High)		Liters / h	2.4			-		
ELECTRICAL RATINGS								
Voltage rating		V	220	230	240	220	230	240
Available voltage range		V	198 - 264			198 - 264		
Running amperes		A	0.45	0.45	0.45	0.29	0.29	0.30
Power input		W	91	97	103	60	65	70
Power factor		%	92	94	95	94	97	97
Max. starting amperes		A	1	1	1	1	1	1
FEATURES								
Controls		Microprocessor						
Timer		ON / OFF Timer (Max. 72 hr)						
Fan speeds		3 and Automatic control						
Airflow direction		Automatic (Remote control)						
Air filter		Washable, easy access, long life (2,500 hr)						
Refrigerant control		Electronic expansion valve						
Operation sound (Hi / Me / Lo)		dB-A	35 / 33 / 29					
Refrigerant tubing connections		Flare type						
Refrigerant tube diameter	Liquid tube	mm (in.)	6.35 (1 / 4)					
	Gas tube	mm (in.)	12.7 (1 / 2)					
Drain connection		25 A, OD32 mm						
Drain pump		Max. head 500 mm above drain connection						
Panel		Optional (CZ-02KPL2)						
Remote controller		Optional (Wired / Wireless)						
Refrigerant tubing kit / Accessories		Optional / -						
Color (Approximate value)		Munsell 10Y 9.3 / 0.4, RAL 9010-GL						
DIMENSIONS & WEIGHT				Indoor unit (including panel)		Package		
Unit dimensions	Height	mm (in.)	358 (14-3 / 32)		310 (12-7 / 32)	165 (6-1 / 2)		
	Width	mm (in.)	1060 (41-23 / 32)		1082 (42-19 / 32)	1147 (45-5 / 32)		
	Depth	mm (in.)	680 (26-25 / 32)		658 (25-29 / 32)	789 (31-1 / 16)		
Net weight		kg (lbs.)	30 (66)		-	-		
Shipping weight		kg (lbs.)	-		26 (57)	11 (24)		
Shipping volume		m ³ (cu.ft)	-		0.221 (7.8)	0.149 (5.3)		

DATA SUBJECT TO CHANGE WITHOUT NOTICE.

Rated conditions

Cooling: Indoor air temperature 27°C DB / 19°C WB; Outdoor air temperature 35°C DB

Heating: Indoor air temperature 20°C DB; Outdoor air temperature 7°C DB / 6°C WB

4. 2-Way Casstte Type (L1 Type)

Unit specifications (E)

MODEL No.		Indoor Unit		S-56ML1E5				
POWER SOURCE				220 - 230 - 240 V, single-phase, 50/60 Hz				
PERFORMANCE				Cooling			Heating	
Capacity	kW		5.6			6.3		
	BTU / h		19,000			21,000		
Air circulation (Hi / Me / Lo)		m ³ / h	660 / 540 / 480					
Moisture removal (High)		Liters / h	2.4			-		
ELECTRICAL RATINGS								
Voltage rating		V	220	230	240	220	230	240
Available voltage range		V	198 - 264			198 - 264		
Running amperes		A	0.45	0.45	0.45	0.29	0.29	0.30
Power input		W	91	97	103	60	65	70
Power factor		%	92	94	95	94	97	97
Max. starting amperes		A	1	1	1	1	1	1
FEATURES								
Controls		Microprocessor						
Timer		ON / OFF Timer (Max. 72 hr)						
Fan speeds		3 and Automatic control						
Airflow direction		Automatic (Remote control)						
Air filter		Washable, easy access, long life (2,500 hr)						
Refrigerant control		Electronic expansion valve						
Operation sound (Hi / Me / Lo)		dB-A	35 / 33 / 29					
Refrigerant tubing connections		Flare type						
Refrigerant tube diameter	Liquid tube	mm (in.)	6.35 (1 / 4)					
	Gas tube	mm (in.)	12.7 (1 / 2)					
Drain connection		25 A, OD32 mm						
Drain pump		Max. head 500 mm above drain connection						
Panel		Optional (CZ-02KPL2)						
Remote controller		Optional (Wired / Wireless)						
Refrigerant tubing kit / Accessories		Optional / -						
Color (Approximate value)		Munsell 10Y 9.3 / 0.4, RAL 9010-GL						
DIMENSIONS & WEIGHT				Indoor unit (including panel)		Package		
Unit dimensions	Height	mm (in.)	358 (14-3 / 32)		Body	310 (12-7 / 32)		Panel
	Width	mm (in.)	1060 (41-23 / 32)		1082 (42-19 / 32)		1147 (45-5 / 32)	
	Depth	mm (in.)	680 (26-25 / 32)		658 (25-29 / 32)		789 (31-1 / 16)	
Net weight		kg (lbs.)	30 (66)		-		-	
Shipping weight		kg (lbs.)	-		26 (57)		11 (24)	
Shipping volume		m ³ (cu.ft)	-		0.221 (7.8)		0.149 (5.3)	

DATA SUBJECT TO CHANGE WITHOUT NOTICE.

Rated conditions

Cooling: Indoor air temperature 27°C DB / 19°C WB; Outdoor air temperature 35°C DB

Heating: Indoor air temperature 20°C DB; Outdoor air temperature 7°C DB / 6°C WB

4. 2-Way Casstte Type (L1 Type)

Unit specifications (F)

MODEL No.		Indoor Unit		S-73ML1E5				
POWER SOURCE				220 - 230 - 240 V, single-phase, 50/60 Hz				
PERFORMANCE				Cooling			Heating	
Capacity	kW		7.3			8.0		
	BTU / h		25,000			27,000		
Air circulation (Hi / Me / Lo)		m ³ / h	1,140 / 960 / 840					
Moisture removal (High)		Liters / h	3.5			-		
ELECTRICAL RATINGS								
Voltage rating		V	220	230	240	220	230	240
Available voltage range		V	198 - 264			198 - 264		
Running amperes		A	0.64	0.65	0.66	0.46	0.48	0.49
Power input		W	135	145	154	100	109	117
Power factor		%	96	94	97	99	99	99
Max. starting amperes		A	1	1	1	1	1	1
FEATURES								
Controls		Microprocessor						
Timer		ON / OFF Timer (Max. 72 hr)						
Fan speeds		3 and Automatic control						
Airflow direction		Automatic (Remote control)						
Air filter		Washable, easy access, long life (2,500 hr)						
Refrigerant control		Electronic expansion valve						
Operation sound (Hi / Me / Lo)		dB-A	38 / 35 / 33					
Refrigerant tubing connections		Flare type						
Refrigerant tube diameter	Liquid tube	mm (in.)	9.52 (3 / 8)					
	Gas tube	mm (in.)	15.88 (5 / 8)					
Drain connection		25 A, OD32 mm						
Drain pump		Max. head 500 mm above drain connection						
Panel		Optional (CZ-03KPL2)						
Remote controller		Optional (Wired / Wireless)						
Refrigerant tubing kit / Accessories		Optional / -						
Color (Approximate value)		Munsell 10Y 9.3 / 0.4, RAL 9010-GL						
DIMENSIONS & WEIGHT				Indoor unit (including panel)		Package		
Unit dimensions	Height	mm (in.)	358 (14-3 / 32)		Body	Panel		
	Width	mm (in.)	1060 (41-23 / 32)		1382 (54-13 / 32)	1447 (56-31 / 32)		
	Depth	mm (in.)	680 (26-25 / 32)		658 (25-29 / 32)	789 (31-1 / 16)		
Net weight		kg (lbs.)	30 (66)		-	-		
Shipping weight		kg (lbs.)	-		30 (66)	13 (29)		
Shipping volume		m ³ (cu.ft)	-		0.282 (10.0)	0.188 (6.7)		

DATA SUBJECT TO CHANGE WITHOUT NOTICE.

Rated conditions

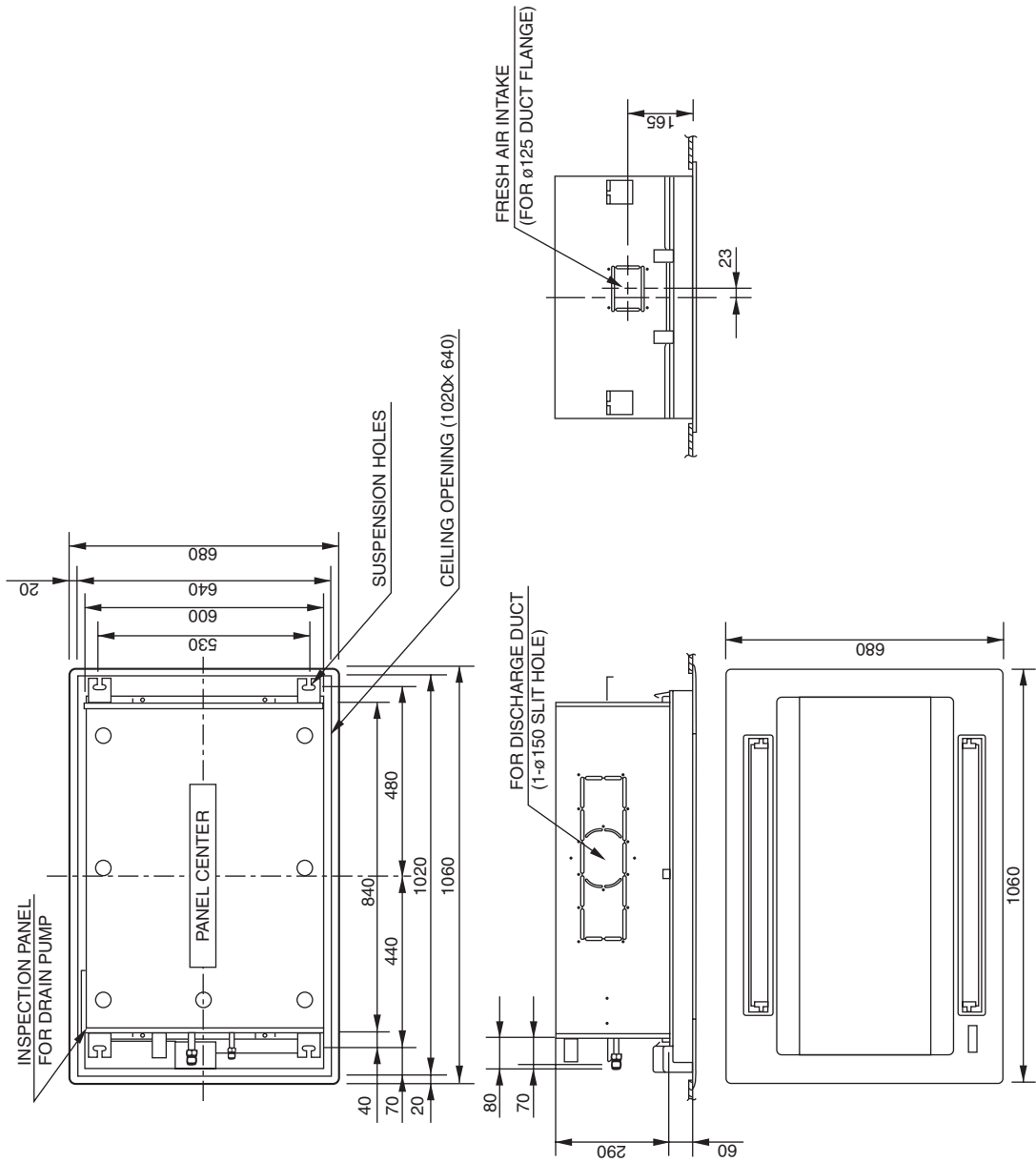
Cooling: Indoor air temperature 27°C DB / 19°C WB; Outdoor air temperature 35°C DB

Heating: Indoor air temperature 20°C DB; Outdoor air temperature 7°C DB / 6°C WB

4. 2-Way Casstte Type (L1 Type)

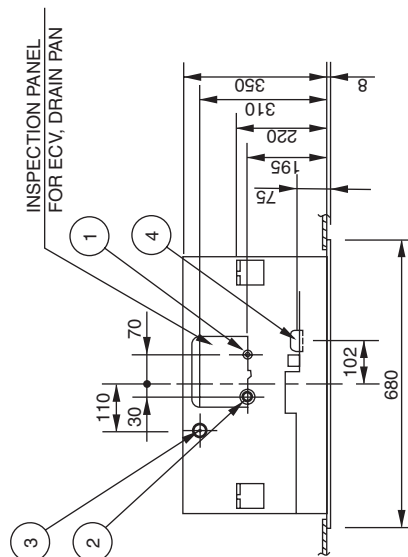
4-3. Dimensional Data

Indoor unit: S-22ML1E5 / 28ML1E5 / 36ML1E5 / 45ML1E5 / 56ML1E5



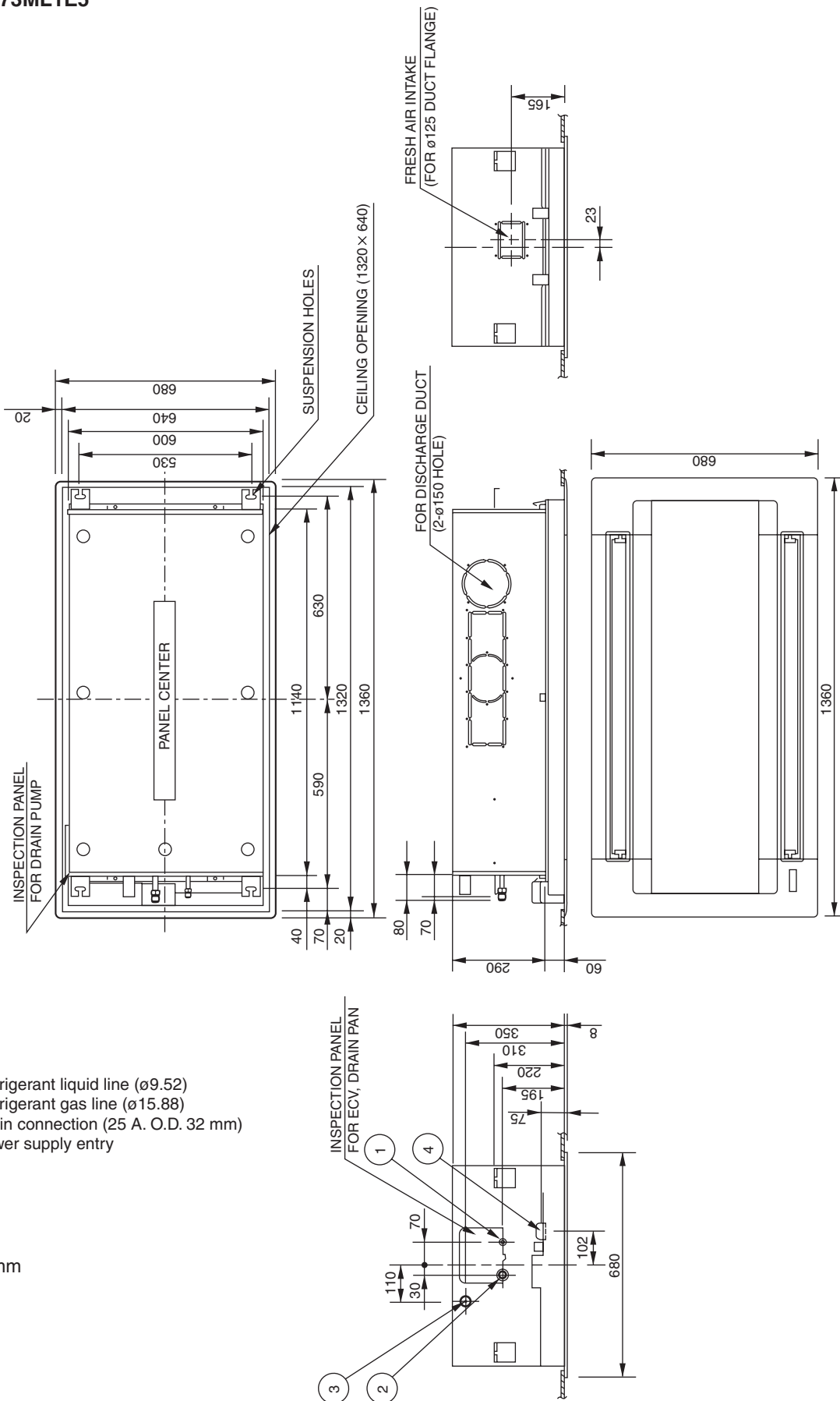
- ① Refrigerant liquid line (ø6.35)
- ② Refrigerant gas line (ø12.7)
- ③ Drain connection (25 A. O.D. 32 mm)
- ④ Power supply entry

unit: mm



4. 2-Way Casstte Type (L1 Type)

Indoor unit: S-73ML1E5



unit: mm

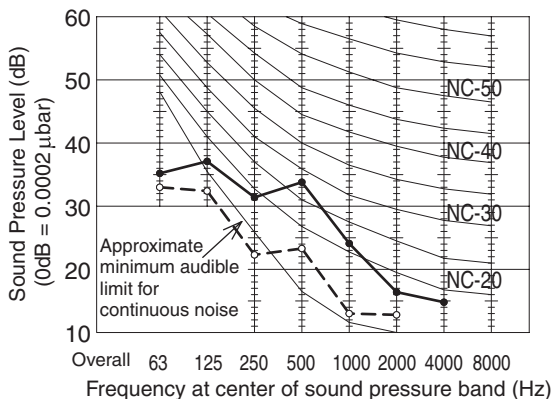
4. 2-Way Casstte Type (L1 Type)

4-4. Noise Criterion Curves

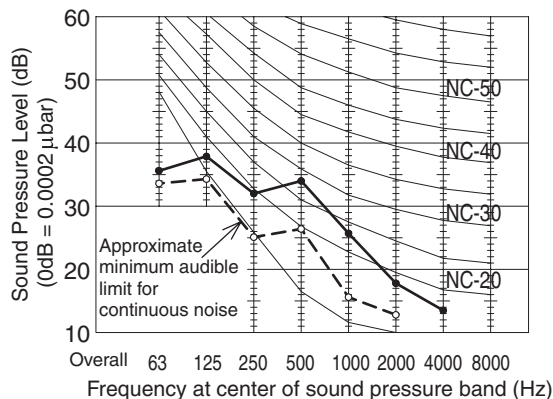
Both 50Hz and 60Hz

—●— Strong
-○- Weak

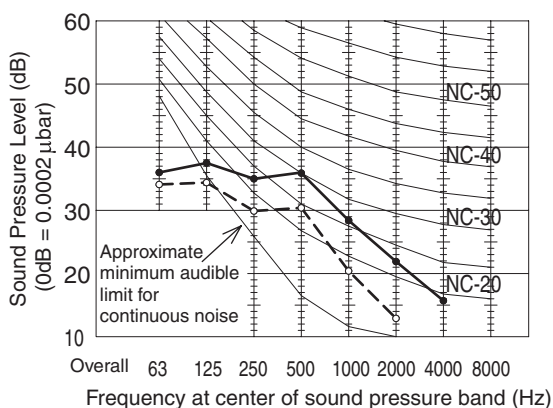
MODEL	: S-22ML1E5
SOUND LEVEL : STRONG	30 dB(A)
HIGH	27 dB(A)
LOW	24 dB(A)
CONDITION	: 1.5 m directly below unit



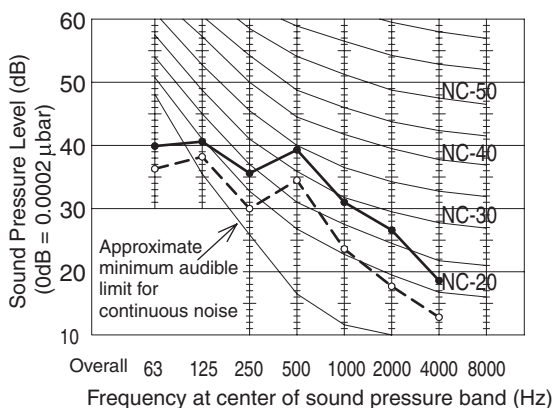
MODEL	: S-28ML1E5 / 36ML1E5
SOUND LEVEL : STRONG	33 dB(A)
HIGH	29 dB(A)
LOW	26 dB(A)
CONDITION	: 1.5 m directly below unit



MODEL	: S-45ML1E5 / 56ML1E5
SOUND LEVEL : STRONG	35 dB(A)
HIGH	33 dB(A)
LOW	29 dB(A)
CONDITION	: 1.5 m directly below unit



MODEL	: S-73ML1E5
SOUND LEVEL : STRONG	38 dB(A)
HIGH	35 dB(A)
LOW	33 dB(A)
CONDITION	: 1.5 m directly below unit



4. 2-Way Casstte Type (L1 Type)

4-5. Air Flow Distance Chart (Indoor temp.: Cooling 27°C, heating 20°C)

