

L1 Type 2 Way Cassette



CZ-02KPL2
Panel
CZ-03KPL2
Panel for S-73ML1E5).



PAW-RE2C4
Optional Controller.
Control for hotel application.



CZ-RTC5B
Optional Controller.
Wired remote controller.
Compatible with Econavi.



CZ-RWS3 + CZ-RWRL3
Optional Controller.
Infrared remote controller.



CZ-RE2C2
Optional Controller.
Simplified wired remote controller.

Slim, compact and lightweight units

Remarkable size and weight reductions have been achieved by improvement of the design around the fan, the weight of all models now being 30kg.

Technical focus

- Airflow and distribution is automatically altered depending on the operational mode of the unit
- Drain up is possible up to 500mm from the drain port
- Simple maintenance

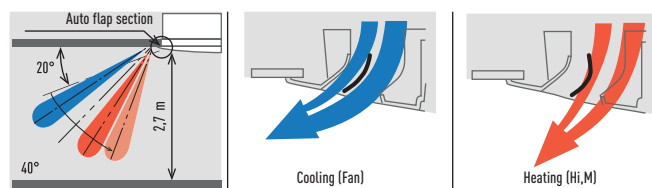
Simple maintenance

The drain pan is equipped with site wiring and can be removed. The fan case has a split construction, and the fan motor can be removed easily when the lower case is removed.

Model		S-22ML1E5	S-28ML1E5	S-36ML1E5	S-45ML1E5	S-56ML1E5	S-73ML1E5	
Cooling capacity	kW	2,20	2,80	3,60	4,50	5,60	7,30	
Input power cooling	W	90,00	92,00	93,00	97,00	97,00	145,00	
Operating current cooling	A	0,45	0,45	0,45	0,45	0,45	0,65	
Heating capacity	kW	2,50	3,20	4,20	5,00	6,30	8,00	
Input power heating	W	58,00	60,00	61,00	65,00	65,00	109,00	
Operating current heating	A	0,29	0,29	0,29	0,29	0,29	0,48	
Fan type		Sirocco fan	Sirocco fan	Sirocco fan	Sirocco fan	Sirocco fan	Sirocco fan	
Air volume	Hi / Med / Lo	m ³ /min	8,00/7,00/6,00	9,00/8,00/7,00	9,70/8,70/7,70	11,00/9,00/8,00	11,00/9,00/8,00	19,00/16,00/14,00
Sound pressure	Hi / Med / Lo	dB(A)	30/27/24	33/29/26	34/31/28	35/33/29	35/33/29	38/35/33
Dimension (HxWxD)	Indoor	mm	350x840x600	350x840x600	350x840x600	350x840x600	350x840x600	350x1140x600
	Panel	mm	8x1060x680	8x1060x680	8x1060x680	8x1060x680	8x1060x680	8x1360x680
Net weight (Panel)		kg	23(5,5)	23(5,5)	23(5,5)	23(5,5)	23(5,5)	30(9)
Piping connections	Liquid pipe	Inch (mm)	1/4(6,35)	1/4(6,35)	1/4(6,35)	1/4(6,35)	1/4(6,35)	3/8(9,52)
	Gas pipe	Inch (mm)	1/2(12,70)	1/2(12,70)	1/2(12,70)	1/2(12,70)	1/2(12,70)	5/8(15,88)

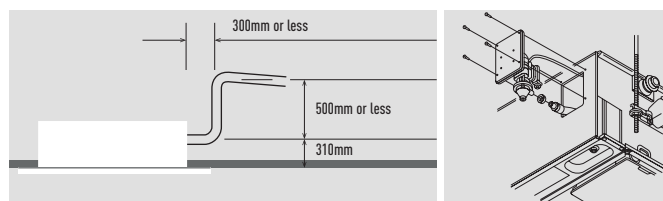
Auto flap control

Airflow and distribution is automatically altered depending on the operational mode of the unit.



Drain up is possible up to 500mm from the drain port

Maintenance of the drain pump is possible from two sides, from the left side (piping side) and from the inside of the unit.



SELF-DIAGNOSING

AUTOMATIC FAN

HUMIDITY CONTROL DRY

AUTO-FLAP CONTROL

AUTOMATIC RESTART

AIR SWEEP

BUILT-IN DRAIN PUMP

OPTIONAL WLAN

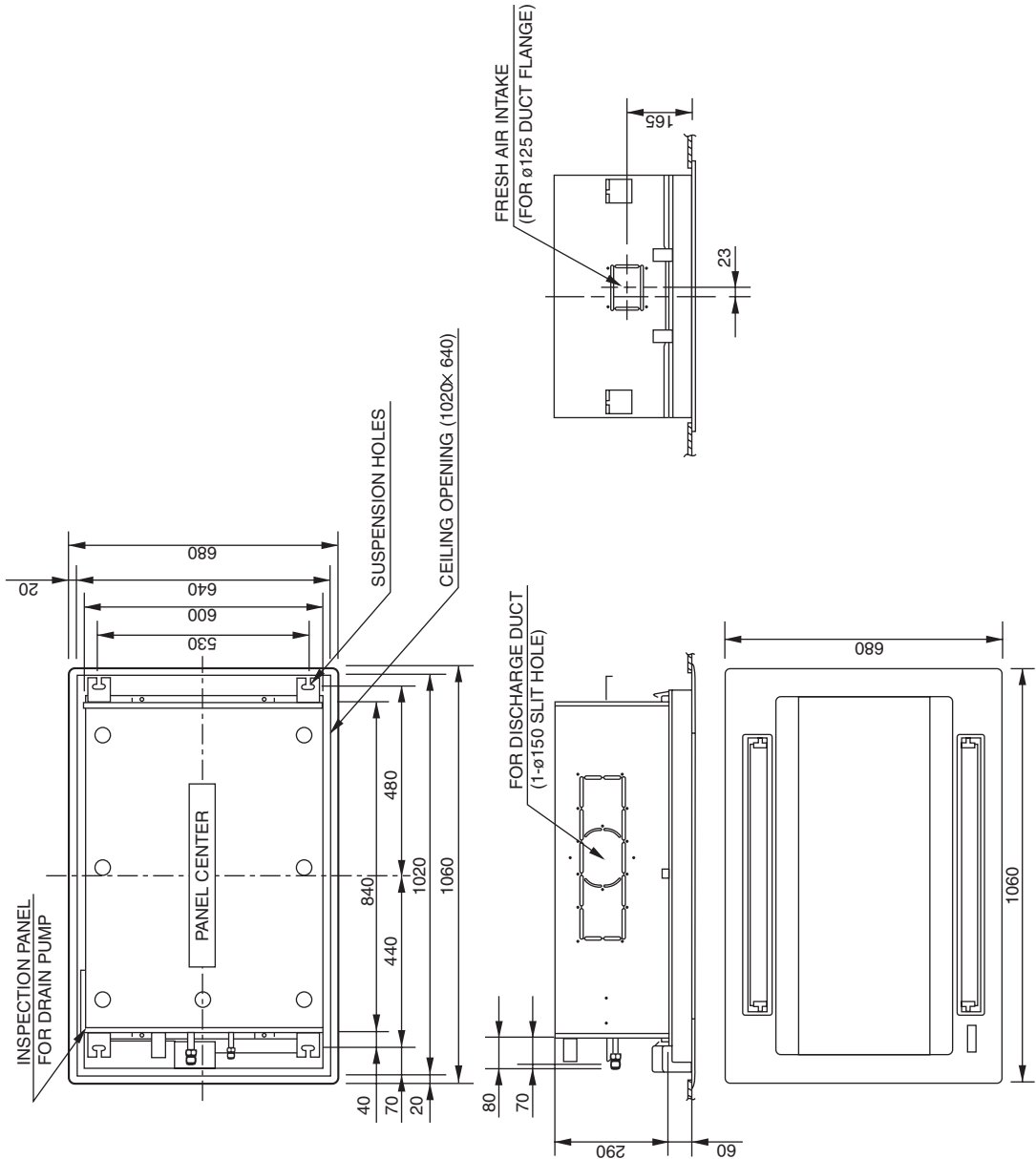
BMS CONNECTIVITY

INTERNET CONTROL: Optional.

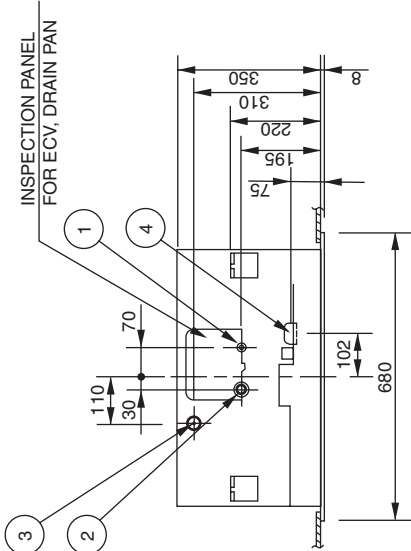
9. 2-Way Cassette (Type L1)

9-3. Dimensional Data

Indoor unit: S-22ML1E5, S-28ML1E5, S-36ML1E5, S-45ML1E5, S-56ML1E5



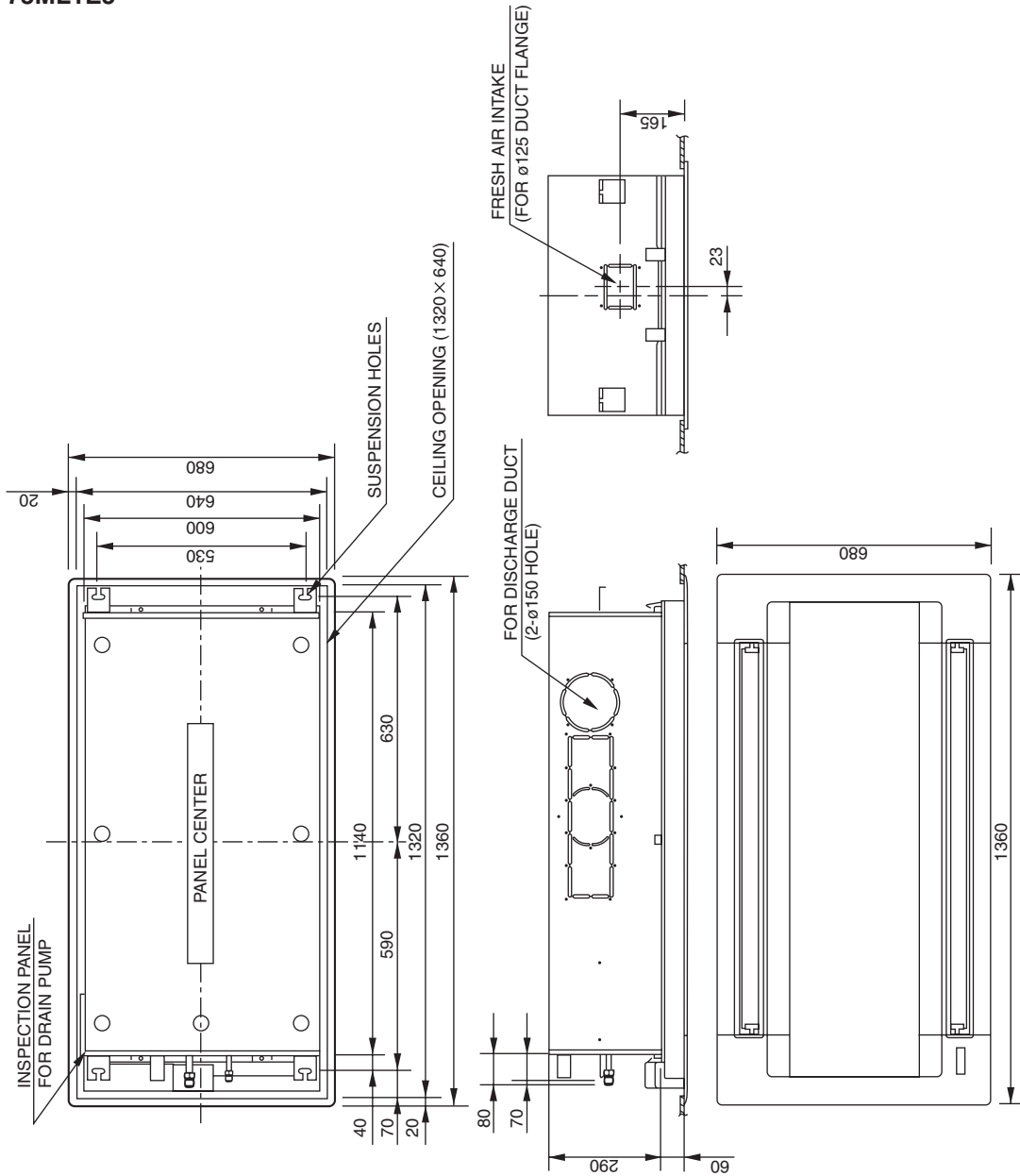
- ① Refrigerant liquid line (ø6.35)
- ② Refrigerant gas line (ø12.7)
- ③ Drain connection (25 A. O.D. 32 mm)
- ④ Power supply entry



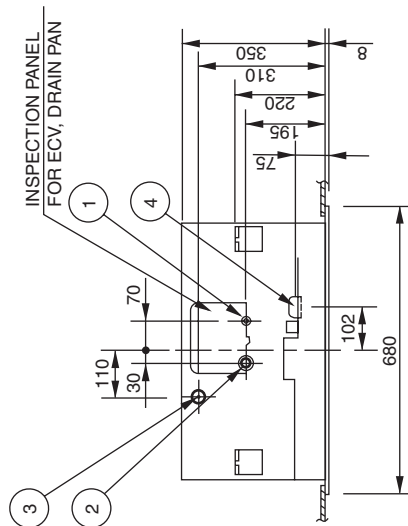
4-9-13

9. 2-Way Cassette (Type L1)

Indoor unit: S-73ML1E5



- ① Refrigerant liquid line (ϕ 9.52)
- ② Refrigerant gas line (ϕ 15.88)
- ③ Drain connection (25 A. O.D. 32 mm)
- ④ Power supply entry

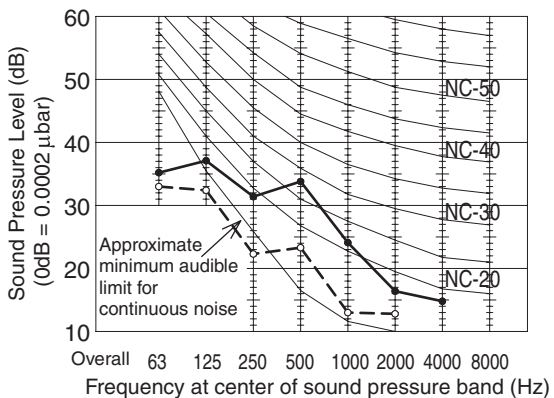


9. 2-Way Cassette (Type L1)

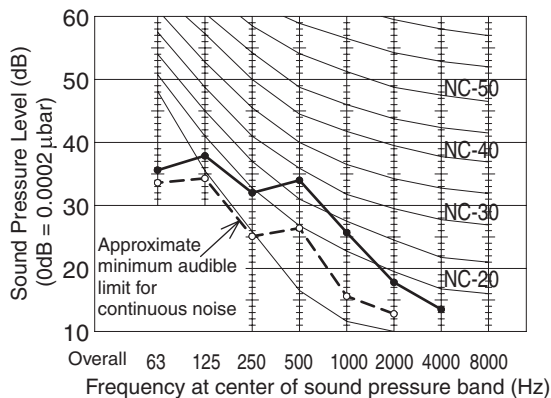
9-4. Noise Criterion Curves

Both 50Hz and 60Hz
 —●— Strong
 -○- Weak

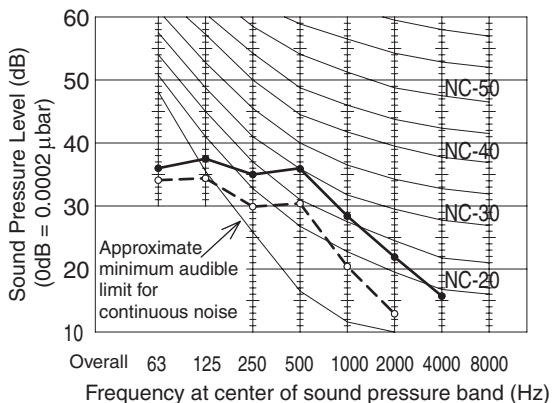
MODEL	: S-22ML1E5
SOUND LEVEL : STRONG	30 dB(A)
HIGH	27 dB(A)
LOW	24 dB(A)
CONDITION	: 1.5 m directly below unit



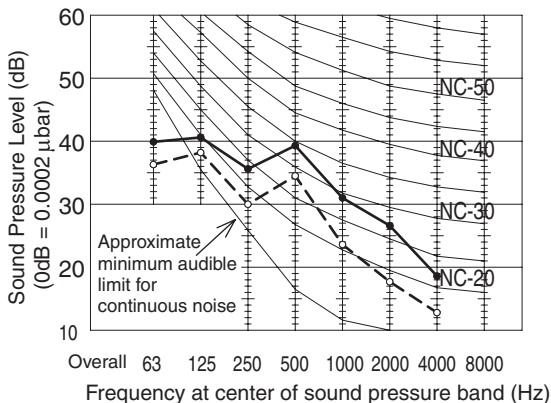
MODEL	: S-28ML1E5, S-36ML1E5
SOUND LEVEL : STRONG	33 dB(A)
HIGH	29 dB(A)
LOW	26 dB(A)
CONDITION	: 1.5 m directly below unit



MODEL	: S-45ML1E5, S-56ML1E5
SOUND LEVEL : STRONG	35 dB(A)
HIGH	33 dB(A)
LOW	29 dB(A)
CONDITION	: 1.5 m directly below unit



MODEL	: S-73ML1E5
SOUND LEVEL : STRONG	38 dB(A)
HIGH	35 dB(A)
LOW	33 dB(A)
CONDITION	: 1.5 m directly below unit



9. 2-Way Cassette (Type L1)

9-5. Air Flow Distance Chart (Indoor temp.: Cooling 27°C, heating 20°C)

