

CENTRALISED CONTROLLERS

System Controller with Schedule timer. Operation with various function from center station

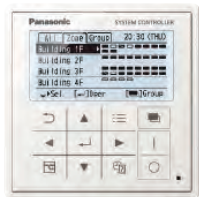


Sample display image /
Operation status display

Operation Status ALL



Operation Status ZONE



Operation Status GROUP

CZ-64ESMC3

Panasonic unveils state-of-the-art digital controller

Panasonic has launched its latest controller, an innovative and easy to use interface that offers full functionality with an integrated schedule timer and system controller, making managing heating and cooling systems easier than ever before. The CZ-64ESMC3 includes Panasonic's popular schedule timer, which gives users full flexibility over when they want their property heated or cooled. Users can adjust the system for holidays, pausing operations for long periods of time so that energy isn't wasted heating or cooling an empty home or office. The controller also allows six operations per day to be programmed.

Mix of current 2 controllers: System controller + Schedule timer.

System controller will be designed by taking priority on these 2 operations with following technical key points:

- Same operation feeling as wired remote controller by touch-key panel
- High visibility and usability by Full-dot LCD
- Based on High wired remote controller
- Maximum 64 group of indoor units, Individual control for 64 units
- 4 zone control; 1 zone = Maximum 16 groups
- Several energy saving function (based on CZ-RTC5B)
- 6 timer program per day for 1 week (7 days) operation (Total 6 x 7 = 42 programs)
- Basic setting items (Temperature, Mode, Fan speed, Flap position) can be set by same manner as CZ-RTC5B

Function list:

Central control functions:

- Central control / individual setting
- Start-stop prohibition for remote controller
- Start-stop / Mode change / Temperature setting prohibition for remote controller
- Mode change / Temperature setting prohibition for remote controller
- Mode change prohibition for remote controller
- Select items for prohibition

- Filter information
- Filter sign
- Filter sign reset
- Ventilation setting

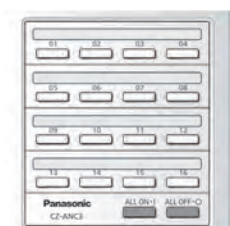
Timer functions and external I/O:

- Weekly Timer
- Timer setting Enable / Disable
- Copy of Timer setting
- Maintenance
- External signal (Start / Stop) (Demand control)
- Centralized control master-slave setting
- Alarm history
- Initial setting
- Clock

Energy saving, maintenance and operating functions:

- Energy-saving control
- Econavi ON/OFF
- Filter information
- Filter sign and hour counter display
- Maintenance
- Service contact
- Initial setting
- Clock display setting
- Name Setting
- Operation lock setting
- Operation sound setting
- LCD contrast setting
- LCD backlight setting
- Select displayed language (EN / FR / IT / ES / DE)
- Administrator password
- Setting information list

ON/OFF Controller. Only ON/OFF operation from center station



CZ-ANC3

- 16 groups of indoor units can be controlled
- Collective control and individual group (unit) control can also be performed
- Up to 8 ON/OFF controller (4 main, 4 sub) can be installed in one link system
- The operation status can be determined immediately
- Dimensions (H x W x D): 121 x 122 x 14 + 52mm (embedding dimension)

Power supply: AC 220 to 240V.

I/O part: Remote input (effective voltage: within DC 24V): ALL ON/OFF.

Remote output (allowable voltage: within DC 30V): ON, Alarm.

Note: As operation mode and temperature settings are not possible with the ON/OFF controller, it must be used together with a remote controller, a system controller etc.

INTELLIGENT CONTROLLER



This controller is the smart solution for your advanced requirement in buildings.

Intuitive operation

The screens used for operations all follow a common pattern, with the screens being easy to read and easy to use.

- Enlarged screen (10,4 inch) with colour LDC
- Smartphone-like operations (Swiping, flicking)

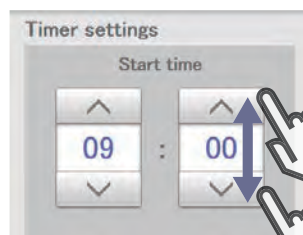
Large screen display. Enlarged by 60%.



Easy Swipe or flick operation.



Swipe.
This is an operation where the finger is slid in a direction (up or down) on the touch panel. This is used to scroll slowly.



Select.
This is an up and down movement of the finger touching the screen, used to pick settings in elements such as spin boxes.

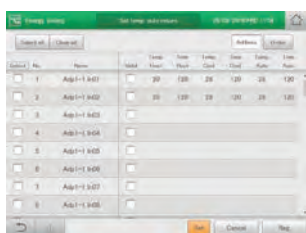


Pull out.
This is an operation where the finger on the touch panel is flicked in a direction (up or down). This is used to scroll quickly.

Enhanced functions for energy saving as standards

- Set temperature auto return settings, Auto shut OFF, Set temperature range limit settings
- Demand control function

Screen of Set temperature auto return setting.



Auto shut OFF.



Screen of Outdoor demand control.



- Outdoor demand input and timer settings possible
- Indoor can be set at $\pm 1^\circ\text{C}$ / $\pm 2^\circ\text{C}$ or thermostat OFF
- Indoor units controlled in sequence at 10-minute intervals

Energy Visualization

- Energy-saving plans are supported with graph display function
- Displays electricity & gas usage distribution

Screen of graph display.



Useful parameters are shown for your better energy saving.
Ex.) Bar graph:

- Indoor unit: Total operating time, thermostat ON operation time (Min.)
Amount used (electricity, gas)
Electricity or gas charges
- Outdoor unit: Outdoor unit operation cycles (# cycles)
Engine time in operation (Hrs.)
Cumulative Inverter power output
Cumulative PV power output

Pulse value selection per different data intervals 1 hour/1 day/ 1 month compared with last year.

Main function

Gesture function (Flick, Swipe)	✓
Graph display (Trends, comparisons)	✓
Web functions (Max. 64 users)	✓
Recipient setting for warning email	✓ (Maximum 8)
Automatic return to setting temperature	✓
Limitation of setting temperature range	✓
Left-on prevention	✓
Quiet operation of outdoor unit	✓
Occupant sensor linkage	✓
Demand function	✓
Charge calculation	✓
Log display	Warning 10.000 items Status change 50.000 items
Linked control	✓
Event definition 50 events, Input: 32, Output: 32	✓
Under maintenance (Under inspection registration)	✓

Intelligent Controller (Touch screen panel). Simplified load distribution ratio (LDR) for each tenant



CZ-256ESMC3

Dimensions (H x W x D): 240 x 280 x 20 (+60)mm.
 Power supply: Single Phase 100-240V ~ 50/60Hz.
 Maximum number of connectable indoor units: 256 units (maximum per link: 64 units).
 Maximum number of connectable outdoor units: 120 units (maximum per link: 30 units).
 - Central control device: Up to 10 units
 Enlarged Display Screen: 10,4 inch Touch-panel colour LCD.
 Pursuing visibility, ease of use. Retrieve data from USB memory: Place the USB port inside the panel (USB memory available in stores). Communication adaptor: CZ-CFUNC2*.

* CZ-CFUNC2 is required to connect more than 128 indoor units.

Functions:

- Graph display (trends, comparisons)
- Econavi ON/OFF
- Outdoor unit quiet operation ON/OFF
- Energy-saving functions: Set temperature auto return settings, Auto shut OFF, Set temperature range limit settings, Energy saving for PAC current value, etc.
- Event control (such as equipment linkage)
- Performs closing at end of any period

Operation and status.

You can check to operational status (ON/OFF, operating mode, alarms, etc.) of all indoor units and outdoor units in real time. You can also select indoor units to change their settings.

Operation scheduling.

You can register daily operation schedules (ON/OFF time, operating modes, set temperatures, etc.) for individual indoor units or groups of indoor units. Operations can be schedule for up to 2 years in advance.

Load distribution calculation for each tenant.

- Air-conditioner load distribution ratio is calculated for each unit (tenant) with used energy consumption data (m³, kWh)

- Calculated data is stored as a CSV type file
- Data from the last 365 days is stored

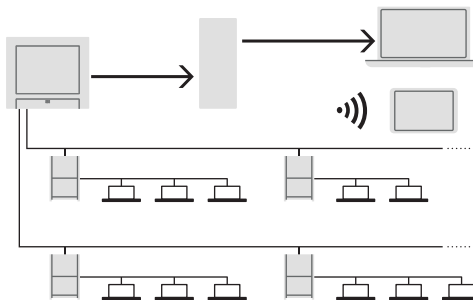
Web application. Web access & control from remote station.

- Accessing from remote PC
- You can monitor/operate system by using Web browser



Remote controller.

The LAN terminal on this unit enables you connect it to a network. Connecting to Internet will enable you to operate the unit and check the status using a PC from a remote location.



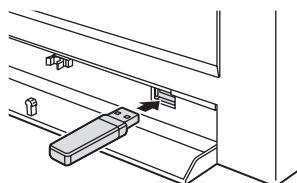
Back up tool to save your commissioning time.

Various data such as distribution, setting, log history etc. can be saved by CSV file.

Setting data of CSV file is available to edit and import to the controller again.

You can save time for commissioning and change setting flexibly and easily by your PC.

- Customize data
 - Data recovery
- Data can be imported again by general USB.



System Configuration Example.

